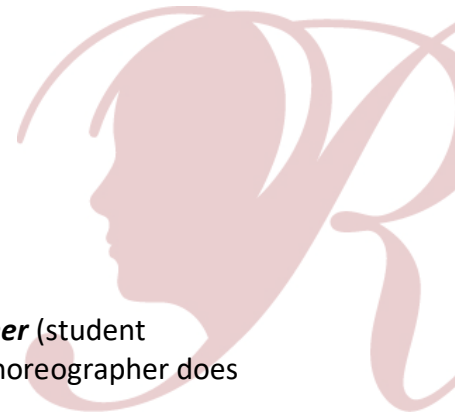


Category Guidelines

Dance Choreography



DANCE CHOREOGRAPHY is the act of creating movement. The *choreographer* (student submitting entry) maybe the performer or one of the performers, but the choreographer does not have to perform in the entry.

Reflect on the 2022-2023 Theme: *Show Your Voice!*

Consider the following styles and ensembles to portray your original choreography: Ballet, Contemporary, Hip Hop, Jazz, Tap, Folk Dance, Religious Dance, Dance Ensembles (color guard/indoor guard), Ice Skating/Dancing and Gymnastics-floor Routine.

Consider use of background song(s), props and the location to show a clear relation of the dance choreography to the theme. An explanation of the origin of the dance and/or the significance of the choreography might be a useful addition to the artist statement when submitting a dance choreography entry that involves traditional, cultural or regional dances. Whether an entry displays formal dance technique or a simple approach, it will be judged primarily on how well the student uses his or her artistic vision to portray the theme, originality and creativity.

Copyright: Use of copyrighted material is prohibited. Plagiarized entries will be disqualified. Use of background music must be cited on the student entry form.

Suggestions for Audio/Visual Quality:

- Use a tripod to hold the camera still.
- Make sure there is plenty of lighting, especially if shooting indoors.
- Turn off all noise-making devices in the room (air conditioners, fans, telephones, etc.).
- Record a short test and listen to it. If needed, change the record volume or microphone location.
- Make sure the background music (if any) is audible on the recording.
- Allow for two seconds of silence at the beginning and end of your recording.

Submission Requirements:

- Only new pieces of artwork inspired by the theme may be submitted.
- Each entry must be the original work of one student only.
- Video must not exceed 5 minutes in length and 1,000 MB (1,000 megabyte) in file size.
- Accepted file formats include: .mp4, .mov, .avi file format.
- Cite background music (if any) on the student entry form.

- If necessary, label CD/DVD/flash drive with title of artwork, arts category, and division.
- Submit dance video and student entry form according to your PTA's instructions.

All participants must also follow Official Rules for Participation

